



Rabbit Anti-Human FoxP1 Monoclonal Antibody (Clone SP133)

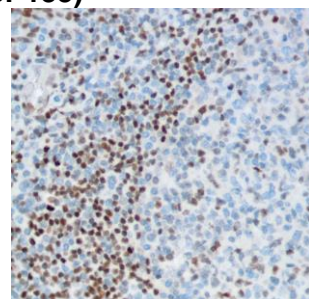
CATALOG #:

M4330 0.1 ml rabbit monoclonal antibody purified by protein A/G in PBS/1% BSA buffer pH 7.6 with less than 0.1% sodium azide.

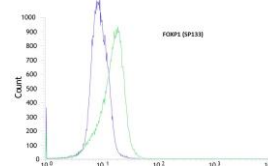
M4332 0.5 ml rabbit monoclonal antibody purified by protein A/G in PBS/1% BSA buffer pH 7.6 with less than 0.1% sodium azide.

M4334 1.0 ml rabbit monoclonal antibody purified by protein A/G in PBS/1% BSA buffer pH 7.6 with less than 0.1% sodium azide.

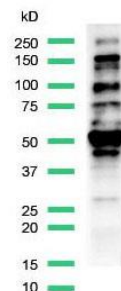
M4331 7.0 ml pre-diluted rabbit monoclonal antibody purified by protein A/G in TBS/1% BSA buffer pH 7.6 with less than 0.1% sodium azide.



Human tonsil stained with anti-FoxP1 antibody



Flow cytometric analysis of rabbit anti-FOXP1 (SP133) antibody in MOLT4 (green) compare to negative control of rabbit IgG (blue)



Western Blot analysis of MCF7 cell lysate

INTENDED USE:

For Research Use Only. Not for use in diagnostic procedures.

CLONE:

SP133

IMMUNOGEN:

Synthetic peptide corresponding to the C-terminus of human FOXP1 protein.

IG ISOTYPE:

Rabbit IgG

EPITOPE:

Not determined

MOLECULAR WEIGHT:

55-75 kDa (four isoforms)

SPECIES REACTIVITY:

Human (tested). (See www.springbio.com for information on species reactivity predicted by sequence homology).

DESCRIPTION:

Forkhead box protein P1 (FOXP1) is a transcriptional repressor that plays an important role in the development of the brain and lung in mammals. The gene encoding this protein may act as a tumor suppressor as it is lost in several tumor types and maps to a chromosomal region (3p14.1) reported to contain a tumor suppressor gene. It is essential transcriptional regulator of B cell development. PAX5/FOXP1 translocation t(9;3)(p13;p14.1) is found in acute lymphoblastic leukemia. FOXP1 is positive in subset of diffuse large B-cell lymphoma and mucosa-associated lymphoid tissue lymphomas.

APPLICATIONS:

Immunohistochemistry (IHC), Western Blotting and Flow Cytometry

IHC PROCEDURE:

Specimen Preparation: Formalin-fixed, paraffin-embedded tissues are suitable for use with this primary antibody.

Deparaffinization: Deparaffinize slides using xylene or xylene alternative and graded alcohols.

Antibody Dilution: If using the concentrate format of this product, dilute the antibody 1:100. The dilutions are estimates; actual results may differ because of variability in methods and protocols.

Antigen Retrieval: Boil tissue section in 10mM citrate buffer, pH 6.0 for 10 min followed by cooling at room temperature for 20 min.

Primary Antibody Incubation: Incubate for 10 minutes at room temperature.

Slide Washing: Slides must be washed in between steps. Rinse slides with PBS/0.05% Tween.

Visualization: Detect the antibody as instructed by the instructions provided with the visualization system.

IHC POSITIVE CONTROL:

Tonsil

WESTERN BLOTTING:

Recommended starting protocol: Dilute the antibody 1:25. Incubate for 1 hour at room temperature. The dilution is an estimate; actual results may differ because of variability in methods and protocols. Optimal dilution and procedure should be determined by the end user.

**WESTERN BLOTTING
POSITIVE CONTROL:**

MCF7 cell lysate

FLOW CYTOMETRY:

Recommended starting protocol: Dilute the antibody 1:100. Incubate for 30 minutes at 4°C. The dilution is an estimate; actual results may differ because of variability in methods and protocols. Optimal dilution and procedure should be determined by the end user.

**FLOW CYTOMETRY
POSITIVE CONTROL:**

MOLT4 Cell Line

CELLULAR LOCALIZATION:

Nucleus

STORAGE & STABILITY:

Store at 2-8°C. Do not freeze. The user must validate any other storage conditions. When properly stored, the reagent is stable to the date indicated on the label. Do not use the reagent beyond the expiration date.

There are no definitive signs to indicate instability of this product; therefore, positive and negative controls should be tested simultaneously with unknown specimens.

If unexpected results are observed which cannot be explained by variations in laboratory procedures and a problem with the reagent is suspected, contact Technical Support at spring.tech@ventana.roche.com.

**WARNINGS &
PRECAUTIONS:**

1. Avoid contact of reagents with eyes and mucous membranes. If reagents come into contact with sensitive areas, wash with copious amounts of water.
2. This product is harmful if swallowed.
3. Consult local or state authorities with regard to recommended method of disposal.
4. Avoid microbial contamination of reagents.